



# LEVIN FOLK MUSIC CLUB INC

## OCTOBER 2018

*Entry \$5 members/\$10 non-members/\$3 children and school students  
Horowhenua Scottish Society Hall, cnr Bartholomew Rd and Middlesex St  
[www.levin-folk-music-club.org.nz/](http://www.levin-folk-music-club.org.nz/)*

### CLUB EVENTS

**OCTOBER 12**

**Friday 12 October**

Concert night with the  
Julie Lamb Outfit

**Friday 26 October**

Club night

**NOVEMBER**

**Friday 9 November**

Concert night with Rainy  
Jack

**Friday 23 November**

Club night

Levin Folk Music Club

Inc

c/o 106 Kawi Rd, Levin

[Contacts](#)

[Website](#)

### **Club Night: Friday 26 October**

Come along and enjoy the relaxed atmosphere of our club night at the Scottish Hall. It is a great opportunity to perform on your own, or jam and join in with others. All welcome 7.30pm, \$2 entry with light supper.

### **October Concert Night: The Julie Lamb Outfit**



There are so many ways to describe this band. Try vintage sounds with a present day feel, storytelling that moves your body, mind and soul or maybe soul infused funky pop.

The 5 piece band swinging our way includes Julie Lamb, vocals, bad jokes and equally dubious percussion. Shan Jordan, keys, vocals and raucous laughter; Eoin Williams, guitar and silver foxness; Chris Fursdon, bass and scholarly tones and Jordan Ross, drums. They will bring original stories by both Julie Lamb and Shan Jordan and throw in some tasty blues infused covers. Julie reckons add a willing Levin audience and we're off. Julie has recorded four albums, played many gigs including to a 10,000 strong audience on the Wellington waterfront, and has been recognised for her contribution to music in many ways. Bing Turkby from NZ Music Magazine says: "It's great to hear some funky pop-rock with good old fashioned backing vocals and horn parts too. A class act made all the better by the joi-de-vivre it encapsulates and projects"

The absolute love and joy Julie holds for music and people draws everyone in, no matter what their age, background or taste. The diverse sound and feel-good vibe that comes from everything the band do brings people back to their music - album after album - year after year. (You gotta check this out, right - Ed)

### **Blackboard Concert**

Bookings for the blackboard slots will open at **7pm**. All performances are to be one item of no more than 5 minutes. We look forward to hearing our talented blackboard artists.

## November Concert Night

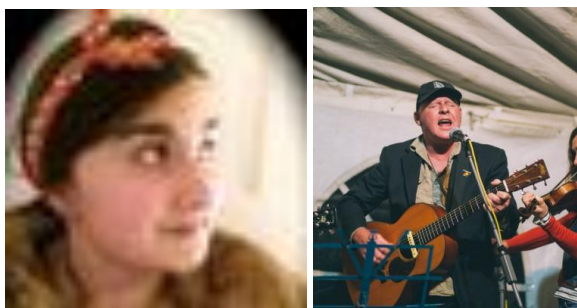
### Rainy Jack Acoustic



Our guest artists for November Concert night are our very own Rainy Jack. The Rainy Jack crew are Kevin Watson on vocals, banjo and guitar; Paul Webster on

bass; Simon Critchley on percussion; Colin Brown on vocals, guitar and mandolin and Jude Woodgyer on vocals. (Sadly the talented Patricia Martin can't make this concert.) Join them on Friday 9th November for a night of great acoustic sounds. Expect everything from foot tapping bluegrass, to folk, blues and country covers you can just relax and enjoy or sing along with. With a whole new acoustic repertoire Rainy Jack are sure to dish up something for everyone with lots of surprises along the way.

### A Comment on Our September Concert Night



We would like to say a big thanks to Ruby and Vic for an amazing concert night in September. We have heard so many positive comments about this concert from members. The combination of cello, guitar and Vic's beautiful songs was spell binding and we wish this talented duo every success in the future.

## Club News

### LFMC Wellyfest Concert



Our Club has agreed to put on an hour long concert at Wellyfest over Labour Weekend as part of a concert featuring clubs from around the area. Cavan has agreed to co-ordinate our Club's performance. So if you will be at Wellyfest and would like to play please contact Cavan on 06364899.

We thanks those who have already let Cavan know they are available.

### LFMC Concert at Te Takeretanga o Kura-hau-pō (Levin) on Friday 19 October 12-1.00pm



Our Club has been asked to perform a concert on **Friday 19 October from 12-1.00pm in Te Takere.**

Kevin Watson is co-ordinating this performance and is hoping to get a number of Club players along to perform a song or two. The Friday lunchtime concerts are a great way to showcase our music to the public and we are keen to take up the opportunity with as many Club musicians as possible. If you would like to perform please contact Kevin ASAP on 06 3688337. For those performing at Wellyfest this could be a great rehearsal opportunity.

### Members Draw

September members draw was claimed by Simon Critchley. October's Jackpot is back to \$5.00.

### Annual Subs



To date 57 members have paid their subs. Val will be set up to renew your memberships and collect your subs at the October concert night. Subs are \$25 and

can be paid to Val at the door or you could use internet banking and transfer the \$25 directly into the Club's Westpac acct.

Account- LEVIN FOLK MUSIC CLUB - 03 0667 0611942 00

### Concert Night Cash



Just a reminder to those of you attending our concert nights. Bring along a little extra cash as we always have great raffle tickets for sale and guest artists will often be selling their CD's at really special prices. Unfortunately at this stage the club does not have eftpos but we are looking into this.

### Congratulations

Congratulations to all the club members who performed in the "Celebrating Women through Song" concerts in Levin and Foxton. The concerts were fun, inspiring, touching, personal, poignant and great entertainment.

Stunning acapella singing, wonderful solo performances that included many beautiful and personal original songs, powerful poetry reading and wonderful ukelele backed singing. To say that this was a special concert does not do it justice so I think I will just say thanks. (Ed)

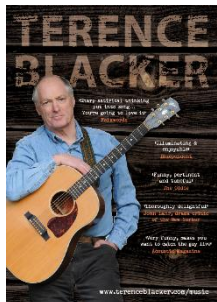
### Congratulations Griff



Griff Davies is a member of the Manawatunes. (Check out their website) At the recent national competition in Tauranga they won a gold medal for their performance and were placed 3<sup>rd</sup> overall. Well done Griff.

## Other Music Events Coming Up

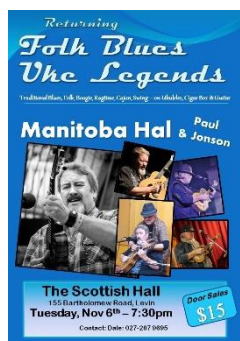
### House Concerts



**Terence Blacker** at Cavan and Penelope's Saturday 27 October, 7:30 pm. \$15 -BYO, small plate for supper appreciated. Warm clothing suggested for an undercover, outdoor concert.

Terence is a singer-songwriter whose quirky, offbeat songs of contemporary life have been compared to the work of Jake Thackray, Tom Lehrer and even Jacques Brel. Celebrating the outsider, the misfit and the unseen, his songs range from the openly comic to the satirical and melancholy.

Bookings to [dalewebb143@gmail.com](mailto:dalewebb143@gmail.com)



**Uke Legends.** This concert is a must-see for all you keen ukulele players.

Tuesday 6 November 7.30pm in the Scottish Hall, \$15.

### Te Takeretanga o Kura-hau-pō (Levin)

Friday lunchtime concerts 12.00- 1.00pm. It is worth popping down to check out these concerts. Usually featuring local musicians, including Club members. If you would like to perform contact Hendrix at Te Takere. Kevin and Colin are playing the Friday 5<sup>th</sup> October concert.

### Jazz Jam



When: Second Sunday of the month, 2.00 to 3.30pm

Where: Te Takere (Levin)

Whether you are looking for a place to hone your musical skills or simply want to take in some great sounds, the monthly Jazz Jam at Te Takere is the place to be.

Always lots on at Te Takere and Te Awahou Nieuwe Stroom. Check out their websites for details.

### Lily's Ranch House Levin

For information and to book a meal please phone, text or email 021-438842, [kathy@lilys.co.nz](mailto:kathy@lilys.co.nz)

### Tsunami Live Concert Venue

Contact Adele for bookings and information on 0211619154 or [adele@tmv.co.nz](mailto:adele@tmv.co.nz)

### Scottish Music Manawatu

For more information, call Glenice on 3584899.

## Festivals



### Welcome to Wellyfest

The Wellington Folk Festival is held every Labour Weekend at Brookfield Outdoor Education Centre – a beautiful site owned

by the Scouts at 562 Moores Valley, Wainuiomata, Lower Hutt. The location is a nature reserve, so please no pets!

This year's festival dates are 19-22 October, 2018. Gates open at 3.00pm on Friday for pre-bookings and gate sales. To book tickets, **click here** or go to the **Ticketing page**.

To read our **latest news click here**, click the **Latest News** tab in the menu above, or check out our facebook page here [www.facebook.com/Wellyfest/](http://www.facebook.com/Wellyfest/).

For details of the 2018 Festival, including information about guest artists, ticketing, the programme etc, go to the **2018 Festival** menu and the tabs below that.

## Feedback

We welcome your suggestions and recommendations for guest bands/musicians. Comments and feedback from Club nights and suggestions or content for the newsletter are always appreciated, either through the website

[www.levin-folk-music-club.org.nz/](http://www.levin-folk-music-club.org.nz/) or directly to a Committee member.

## Other Music Clubs in the Region

For details of what's on use their links.

Acoustic Routes

[acousticroutes.org.nz/](http://acousticroutes.org.nz/)



[www.klmc.org.nz](http://www.klmc.org.nz)

WELLINGTON  
BLUEGRASS SOCIETY

[wellingtonbluegrass.net.nz/](http://wellingtonbluegrass.net.nz/)

Mainly Acoustic

Second Tuesday, Mayfair  
Café. Contact: Kevin & Sue  
Meehan, 04 970 4008

## Thanks for the Support



Support our local music store. Show your membership card in store for a discount. Visit the Sound Centre's website ([www.ksc.net.nz/](http://www.ksc.net.nz/)) to see what is on offer at our local music store. You'll be surprised at the range available. From guitar picks and music stands, music books, ukuleles to sound systems, amplifiers, recording equipment and more.



The Horowhenua Chronicle supports the LFMC by publishing an article each month advertising our Concert Nights. This is one of the main ways we let our community know what is happening at the club. Thanks to the Chronicle for this important support.