



LEVIN FOLK MUSIC CLUB INC

JUNE 2016

*Meetings: Second Friday of the month at 7:30pm
Entry \$5 members/\$10 non-members/\$3 children and school students
Horowhenua Scottish Society Hall, cnr Bartholomew Rd and Middlesex St*

www.levin-folk-music-club.org.nz/

CLUB EVENTS

JUNE

Friday, 10 June: Concert night with Hobnail

Friday, 24 June: Club night with a sound system set-up for an open-mic sing-a-round and jam

JULY

Friday, 8 July: Concert night with Gallimaufry

Friday, 22 July: AGM and club night

Levin Folk Music Club Inc
c/o 22 Seddon St, Levin
Contacts Website

Concert Night: Hobnail



Join us on Friday, 10 June for another great concert night. Our guest artists are Hobnail. From humble beginnings in the bars of Wellington, this was the little band that could. So they did, from Wellington to the world. Since 1994 Hobnail have travelled the length and breadth of this country and have also performed in Australia, North America, and various bits of Europe.

They have been finalists at the New Zealand Music Awards for Best Folk Album and twice for Best Country Song. They celebrated their 21st birthday in 2015 with a new album, "String Things". Hobnail are festival favourites around New Zealand and their live performance has been variously described as "spellbinding", "captivating", "incendiary", "rousing" and "highly spirited and entertaining".

Featuring "Jo Moir's barnstorming fiddle", great songs, spectacular harmonies, and over 100 years of collective performance experience, the Hobnail live show is one not to be missed.

"When the Hobnail Boots take the stage, they tear into their set with mucho gusto, injecting volume and energy into the evening with their illustrious blend of Country, Celtic and Folk/Rock". Nelson Mail
Blackboard

Before our guests perform there will be a blackboard concert (7.30–8.45pm) followed by supper. Black board bookings will be taken at a table at the **front** of the hall from **7.00pm**. We appreciate everyone co-operation.

This is going to be a wonderful and memorable concert not to be missed.

Club Night

Come along on Friday 24 June, 7.30pm to the Scottish Hall Bartholomew St Levin. We will have a sound system set up for you to use and lots of opportunities for playing and jamming. \$2 door charge for everyone with a cuppa and biscuit provided. New players always welcome.

July – Gallimaufry



Gallimaufry are our guest artists on 8 July. They are a group of musical mates from Palmerston North. Wayne on bass and

vocals; Jane (1) guitar and lead vocals; Jane (2) fiddle, percussion and vocals; Di on mandolin, tin whistle, bodhran and vocals. A mix of musical styles ranging from classic celtic, through country/gospel and folk – with odds and ends to surprise you.

With the line-up shown in the photo we can expect some foot tapping high energy music. I am told a bit of ceilidh dancing could also be on offer.

Club News

Notice of Annual General Meeting (AGM)

The AGM will be held on Friday 22 July at 7.30pm in the Scottish Society Hall Bartholomew Rd. The AGM meeting will be followed by supper and club night sing-around and jam.

Subscriptions are due 30 June 2016 or at the AGM. Please note that only financial members are eligible to nominate or vote in elections, and to discuss and vote on motions.

Special Note

1. If any financial member wishes to bring a motion to the AGM, it must be in written form, signed and seconded by a financial member of Levin Folk Music Club Inc and provided to the secretary by 8 July 2016.
2. If any financial member wishes to bring a motion to the AGM to amend the constitution, it must be in written form, signed and seconded by a financial member of Levin Folk Music Club Inc and provided to the secretary by 1 July 2016.

Can you help?

The strength of any club rests on the experience, talents and involvement of its members. Your attendance at the AGM is really important and please consider whether

you would like to join the committee to help guide the club through 2017. Nominations are very welcome.

Draft Concert Night Guidelines

The committee has sent members a copy of the **draft concert night guidelines**. These include draft guidelines for the black board concert and draft guidelines for the trial of floor spots. They are available on our website or please contact the secretary at: colin-brown@xtra.co.nz for a copy.

Club Helpers

We have all seen the great job the club helpers do at our concert nights. If you would like to lend a hand it would be greatly appreciated. Just let the people at the door know you would like to be a helper or email Jill on: jillandguy@xtra.co.nz

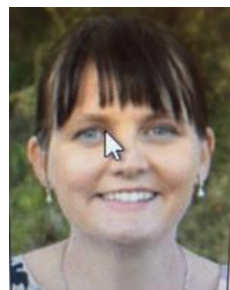
Music Month Levin



The rain didn't stop musicians and audiences across Levin enjoying a day of high quality and varied music. Thanks to Eboney and Paul from Kings Sound Centre for their organisation. The LFMC moved into Caffeinate (Café) and performed a three hour concert. Thanks to Guy for hosting us at short notice and for the great coffee. I heard lots of positive comments on the performances, so well done everyone. Jo did a fantastic job of organising things for us. This event goes from strength to strength and gives us an opportunity to showcase our music to the community.

Performers were: John Morrison, Chris & Barbara, Ivan Johnston, Cavan Haines, Keith Heginbotham, Rona & Jeremy, Silvawood, Gladstone Road, Jennie Cavaye, Jo & Kate, Charlie, Helen, Patricia & Ruth and Rene Vanderweert.

Logo Competition Winner



My name is Nita McGauran and I am a graphic designer based in Wangaratta, Australia. I run my own freelance business so I can work around my 2 young children. I found the Club's competition on a Google search. I'm always on the

lookout for design contests, as I enjoy the freedom of designing without having to follow a strict brief. It is a pleasure to design for small local clubs who generally don't have the resources to employ a professional designer - I think they still deserve a great logo! Although I am not musical myself, I still have a great appreciation of all types of music, including folk - So I am very pleased that my design was chosen to represent the Levin Folk Music Club.

Logo in Action



We have used the logo on our new club double sided sign. This made an eye catching entrance to our Music Month concert and will be displayed at other club events.

Members Jackpot Draw

May's members draw was won by Keith Heginbotham who donated it back into the pool. Jackpot is \$10 for the June concert night.

Members News

Performances



Kevin Watson, Silvawood and Keith Heginbotham played at the Ohau Market in May. If you are interested in playing contact Kevin Watson at, taketwo@paradise.net.nz



Chris played a lovely set of his favourite songs and a number of originals at his Te Takere Friday lunchtime concert.



Ukuladies performed at Te Takere with folk members Dale, Barbara and Rona.

Jo and Helen's House Concerts

Hi everyone. Our first concert is on Saturday 11 June at 189 Queen Street, LEVIN, from 2:30 onwards. \$10 entrance at door and we will play one 40 minute set, have a break for a cuppa and a bikkie and then play a second set including a selection of our own songs. The second concert is at 129 Mairangi Road, Wilton, Wellington on 18 June at 7.30pm and will follow a similar form.

Check it out at, <https://www.facebook.com/Jo-Helen-1576364849341363/>. For more information, contact Jo on 021 205 9972.

Meet a Member



Yes this is our Kevin, although he's not saying when this album cover photo was taken. Kevin grew up in Te Kauwhata on the Horticultural Research Station. At 17 he moved into a hostel in Wellington and spent all his spare time over the next three and a half years practicing guitar. He also discovered jazz and in particular improvisation, which to him is what music is all about. He got noticed at the Wellington Musician's Club and invited to join the band at the Empress Ballroom. Kevin played guitar in the big band, three nights a week for over seven years. His talent was further recognised when he was invited to HMV Studios to play guitar on a recording by Rochelle Vinsen. He quickly became the guitarist of choice for most of the recording sessions in Wellington. He also recorded his own album in his early twenties. Kevin has recorded with all the greats of NZ music at that time, including Bruno Lawrence, Maria Dallas, The Chicks, Peter Posa, Mr Lee Grant, Howard Morrison, Kiri Te Kanawa, Malcolm McNeill and loads more. He played with Midge

Marsden in the Country Flyers and has been on tour with the NZSO. He continues to write, record and perform and sees all genre of music as just different languages to study, learn and enjoy. We are privileged to share his wealth of talent, experience, joy and passion at the LFMC. Read more on:

http://www.ashack.co.nz/nzmusic/musicians/kevin_watson.htm

Picks & Tips for the Month

Chris's Digital Diary

Chris has found this really handy app you might like to check out. *Hum* is an iPhone *app* that combines note-taking and audio recording into a single *app* for capturing and organizing all your song writing snippets, lyrics, chords, and more. <https://justhum.com/>

Paul's (Kings Sound Centre) Gear Pick



There is something really special in the store at present. Check out the amazing limited edition Cajon beat boxes hand

crafted by Charles Bagnall out of stunning timbers. They not only look fantastic, but due to the clever internal structures, produce a stunning range of different drum sounds when tapped in different places. These are unique and are much more than musical instruments.

Other Music Events Coming Up

Bent Horseshoe Presents

Kelburn Viaduct Municipal Ensemble Jug Band

25 June, 7.30pm at the Hokowhitu Bowling Club.

Price \$20. The style of music encompasses rural blues and good-time music with a mix of original folk / blues thrown in

Bookings: Contact: steve@benthorseshoe.co.nz or Ph. (06) 329 8808

Te Takere (Nick Van Dijk)

Friday lunchtime concerts

- Friday 3 June 12 pm, Nigel Parry
- Friday 10 June 12pm Colin Paki and Guests:
Lunchtime Waiata for Matariki celebrations

Saturday 11 June 4pm. Matariki Concert featuring Nga Wai o Manawhenua combined Kapahaka group, Taonga

Puoro traditional instruments and Community Hakari kai and sky lantern release.

Youth Jam

Every third Friday of the month is our Youth Jam. This month it is on the 17 June at 7 pm.

Sunday Concert

Sunday 26 June 2.00pm



Vikki Clayton and Niels Gedge
Vikki Clayton is regarded as one of the finest singers of her generation and adored by audiences and peers. Vikki is a performer of many parts with a proven track record in the folk/rock world. Her voice is clear, sweet and beautiful, the guitar work astounding. She's sensitive, clever, witty and great fun.

"Unbelievably talented" **Folk Roots**



Niels Gedge is a Wellington-based singer songwriter. His music draws from country, blues, folk, Appalachian and gospel traditions and many of his songs draw on the landscapes of Aotearoa to

tell stories of life, and the echoes of lives past. Niels has performed in acoustic music and folk clubs, pubs, cafes and at events in the UK, Fiji, and throughout New Zealand. His songs have been played on National Radio and on radio stations in London and Wellington.

Camping Festivals (check Facebook/website for details)

Mid Winter Holler

The Mid Winter Holler - americana music weekend will be held at Tatum Park 1-3 July. A weekend indulgence of great music, workshops and the Mid Winter Feast and Concert on the Saturday night - For details email midwinterholler@outlook.com

Mercury Bay Music Festival

In the Coromandel on Queens Birthday weekend. This is an International Festival of mixed genre music with some heavy duty NZ and overseas artists. If anyone would like further info please phone 021128038, email phil@phildrane.com or contact the team at www.mercurybaymusicfestival.co.nz

Strathean weekend at Te Horo is 15-17 July.

Feedback

We welcome your suggestions and recommendations for guest bands/musicians. Comments and feedback from club nights and suggestions or content for the newsletter are always appreciated, either through the website www.levin-folk-music-club.org.nz/ or directly to a committee member.

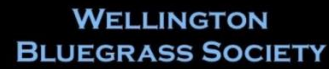
Other Music Clubs in the Region for details of what's on, use their links.



acousticroutes.org.nz/



www.klmc.org.nz

	wellingtonbluegrass.net.nz/
Mainly Acoustic	Second Tuesday, Mayfair Cafe, Contact: Kevin & Sue Meehan, 04 970 4008

Thanks for the Support



Support our local music store. Show your membership card in store for a discount. Visit the Sound Centre's website (www.ksc.net.nz/) to see what is on offer at our local music store. You'll be surprised at the range available. From guitar picks and music stands, music books, ukuleles to sound systems, amplifiers, recording equipment and more.