

Newsletter July 2014

Compere:
Dale Webb

Door team:
Ian Todd and
Paul Webster

Levin
Folk
Music
Club



Levin Folk Club: Second Friday of every month at 7:30pm
Entry \$5 members/\$8 non-members/\$3 children.
Horowhenua Scottish Society Hall, corner Bartholomew Road
and Middlesex Street, Levin



This Friday, July 11th, we have as our guest artists the Celtic band **The Jimmies** - a long established band, polished and talented.

Members are: Mary Hubble – vocals, flute, whistles;
Kevin Ikin – vocals, banjo, bouzouki, mandolin, guitar and drums;
Ann McChesney – keyboards, vocals;
Murray Kilpatrick - guitar, banjo, accordian, vocals
Kevin McLoughlin- guitar, vocals
Susan Ellis- fiddle



Presenting Irish and Scottish songs - plus you are likely to hear a little bit of country, rock and roll standards from the 60s and 70s and Kiwi songs, old and new.



Our guest is Rob Joass from Wellington. Rob is also in the band Hobnail and various other bands but this time is appearing solo and promoting a newly released solo CD. Joining Rob (vocals, guitar) are Kim Bonnington (guitar , vocals). and possibly Dusty Cameron (mandolin, vocals).



Our Annual General Meeting is at the Horowhenua Scottish Society Hall, 7:30pm on Friday 25 July.

We need club members to come along and show interest in electing their representatives on to the committee. The Annual General Meeting is for club members only, 7:30-8:30pm approx, with supper to follow. (Membership forms will be available at the meeting and people can sign up or re-new at this AGM.)

All are welcome to the supper and the public Acoustic Night jam session that follows.

(There will be no music instruments out until the AGM finishes, please.)

Nomination forms for chairman/secretary/treasurer/ committee member have been forwarded to club members and are available at club meetings. One nomination per form, and forms need to be signed both by the club member accepting a nomination, and by the two nominating club members.

Any motions for consideration at this meeting need to be lodged in writing to the club secretary, **14 days prior to the date of the AGM**, as per our constitution. (By July 11th)



Your Club membership expired on 30 June. Please renew to continue to receive membership benefits. You also need to be a club member to be able to participate at the coming AGM. We encourage new members in particular to be a part of the AGM. We welcome new ideas and input, and new people to form the committee.

CLUB NIGHT
Friday July 11th

**Next
Month** August
8th

**AGM
2014**

Friday 25 July
7:30pm
followed by

LFMC
Acoustic Night

Membership re-
newal due:



Strathean Folkus weekend
Contact:is Julie:
julie.k@paradise.net.nz

Email Anne if you would like the Strathean weekend pdf brochure forwarded to you.

Hi everyone
Bookings are open for this year's Strathean 'Folkus' weekend to be held from Friday 11 - Sunday 13 July. Folkus is a relaxed weekend of informal music and socialising in a comfortable 'country house' setting.

Accommodation is limited to 28 but we can include a few more people in their own vans. If anyone would like to run a workshop or has ideas for one, let Julie know. They will provide tea, coffee, etc and soup for tea on Friday evening. Please bring all your other food, including a contribution for Saturday's pot-luck dinner. Because accommodation is limited, everyone will be booked in the order they reply. No need to pay in advance. Julie will try to allocate beds according to people's needs and preferences but please understand that this is not always possible. Day visitors are welcome. Please pass this invitation on to anyone you think would be interested.

Julie Kilpatrick

Also "UP THE MOUNTAIN 22-24 Aug.
OLD TIME APPALACHIAN MOUNTAIN MUSIC
FESTIVAL

VISIT THE WEBSITE oldtimeymusic.kiwi.nz.

For more information visit the FaceBook group : Old Time Music in New Zealand
Or email Helena Faust hbfaust@hotmail.com or Don Milne donmilne@xtra.co.nz



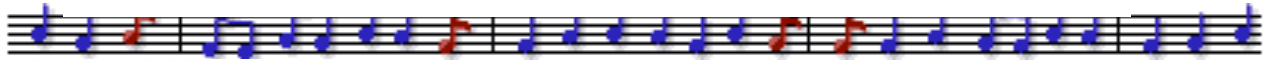
Riverslea Retreat, Riverslea Lodge, Otaki Gorge Road, 29– 31 August

The Riverslea Retreat is an annual highlight of the Acoustic Routes calendar. A great opportunity to drive away the winter blues, with warm company and wonderful music.

Located on the Otaki Gorge Road, Riverslea can accommodate up to 37 people, including people with disabilities and mobility problems. The lounge has a cosy log fire - a lovely room to play and socialize in. There is also a great kitchen and dining area.

Tea, coffee and milo are provided and there will be a shared meal on Saturday night. Pillow, pillow case and bottom sheet are provided on the bunks.

Charges are \$45 per night and \$25 for a day visitor. Please contact Anne McGregor to register: annemcgregor@xtra.co.nz or 2338567



<http://www.ksc.net.nz/>

NZ Music Month video footage will be on this site shortly.

Acoustic

Routes

www.acousticroutes.org.nz

Kapiti Live Music

<http://www.klmc.org.nz>

Bluegrass

www.wellingtonbluegrass.net.nz

Mainly Acoustic

Second Tuesday of each month, Mayfair Cafe,
166 Main St, Upper Hutt, 7:30pm.
Contact: Kevin & Sue Meehan,
Ph 04 970 4008

Use the website links to find out who the guests are and what is on each week.

Riverslea Retreat

Open to all.
Friendly welcome
assured



Present your
Membership
Card at Kings
Sound Centre!