



Levin Folk Music Club



Levin Folk Club: Second Friday of every month at 7:30pm
 Entry \$5 members/\$8 non-members/\$3 children.
 Horowhenua Scottish Society Hall, corner Bartholomew Road and Middlesex Street, Levin

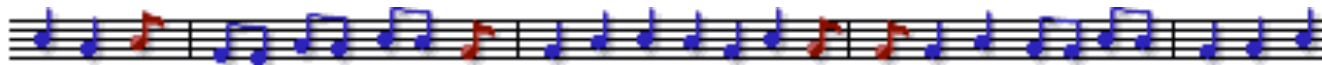
Compere:
 Rona Cooper



AGM
 ANNUAL GENERAL MEETING

LEVIN FOLK MUSIC CLUB INC : Come along to the Horowhenua Scottish Society Hall on August 3rd, 7:30pm for our Annual General Meeting. It is preceded by a short Special General Meeting to discuss amending/adding to our constitution. Details about this evening, plus nomination forms etc have been forwarded to all club members.

Please remember to renew your membership either prior to this night or you can do this at the meeting. If you are not already a member, you can become one at this meeting.



Long time musicians and singers Penni Bousfield and Janet Muggeridge began performing together as the Gazebo Girls in 2011. Appearances include the 2011 New Plymouth Festival of Lights, Waharau Folk Festival (Auckland), Acoustic Routes in Wellington, Wellington Bluegrass Club and they supported Paul Symons and American singer Kristina Olsen on their recent tours. The Gazebo Girls are booked as one of the main acts at this year's Wellington Folk Festival, alongside acts from the U.K., America and Australia.



The Gazebo Girls' repertoire runs from traditional working songs and folk ballads to fresh takes on songs by the likes of Gillian Welch, Shawn Colvin, John Hiatt, Townes Van Zandt and Jolie Holland (and includes a handful of Kiwi songwriters). Penni's guitar lays down the foundation, Janet's mandolin adds rhythmic chops and instrumental sparkle. On the top their voices blend and soar with the kind of close harmonies that 'send a shiverin' shot of pleasure to the soul'.



Our guests next month (August 10th) are The Prowse Brothers - first time appearance as a family group at our folk club. Chris (guitar/vocals), Richard (double bass/vocals), Daryl (banjo/piano), Robert (violin) and Rob (mandolin/guitar/songwriter/vocals). This is a special line-up of 5 very talented brothers who normally perform in different bands or duos in various cities around NZ, but who are coming together for a one-off tour of The Prowse Brothers. Bluegrass, Newgrass and Texas Swing music. Not to be missed!



In July, the Horowhenua Scottish Society require their hall for ball practises on the normal date we hold our Acoustic Night.
 So Acoustic Night is heading off to the **Levin Library** for July 27 - a cosy warm place on a winter night! The theme (optional) is "Time"
 Come along to the main library door, at 7:30pm, 27 July, and make your way in to the library foyer. Bring along your own music stands to the library.

Door Team:
 Alastair &
 Denise Newton

CLUB NIGHT

Friday
 July 13th

THE GAZEBO GIRLS

Janet Muggeridge
 and
 Penni Bousfield



LFMC
 Acoustic Night

NOTE:
 CHANGE
 OF VENUE -
 THIS MONTH
 ONLY

Acoustic

Routes

Bluegrass

Wellington Bluegrass Society

Kapiti Live Music Club

Thursday July 26, 8 pm, MEOW 9 Edward St

THE ACOUSTIC ROUTES JULY CONCERT- A Wellington Showcase, featuring performers from folk and acoustic music clubs in the Wellington area. Acoustic Routes, the Bluegrass Society, Kapiti Live Music Club, Mainly Acoustic (Upper Hutt) and Pukerua Bay.

Friday 20th July 8:00pm - Society night featuring Dixie Lix - our local heroes present a mix of country and bluegrass. Look out for their new bass player! \$10 entry.

Saturday 21st July 8:00pm - concert featuring The Cattlestops - with two great CDs, finalists in 2008 for the RIANZ Country Music Album, a movie sound track and eight years Cattlestoppin' under their belts. \$20/\$15 members or children.

<http://bluegrass.wellington.net.nz/>

<http://www.klmc.org.nz>

Lindale Café, Lindale, Paraparaumu. Wednesday 18th July, Kapiti Live Music presents: Elan & Marliesje Vanmills

With a percussionist also, these two musicians, coming out of The Volunteers, are to do a very tasteful set for us this month. Coming from a large band to a quieter threesome.

This will be slightly shorter set allowing plenty of room for lots of local musicians to fill the extended black-board session. Starts with backboard session at 7:30, then our guests.

Good dinner food available and drinks at Lindale Café

This workshop, led by this month's guests artists **Janet Muggeridge** and **Penni Bousfield** is being held in Levin North School's staffroom.

Levin North School is in Weraroa Road with the staff room being very close to the main entrance. (Turn left and continue round the corner at the front entrance, and the staffroom is the second door just around the corner, by the trellised patio.)

If you want to attend this workshop, please notify Anne (annemc@ihug.co.nz) , as there is still room for a few more participants.

DATE: **Saturday 14 July Starts at 10am** (approx an hour and a half workshop session)

COST: \$10

Please come along with the right change to pay the workshop fee - thanks. The ukulele booklet will not be available as the compiler has some concerns about copyright issues. I will instead show a list of web sites that include downloadable pdf ukulele and guitar song booklets and will email it to all participants after the meeting or you can take a copy of the web addresses (emailing it means you can just conveniently click on a web link instead of painstakingly copying the address into your browser.)



“Jamming with Others” - a workshop for ukulele and other acoustic instruments

Learn some useful Jam Session leadership skills while playing along in the jam session !